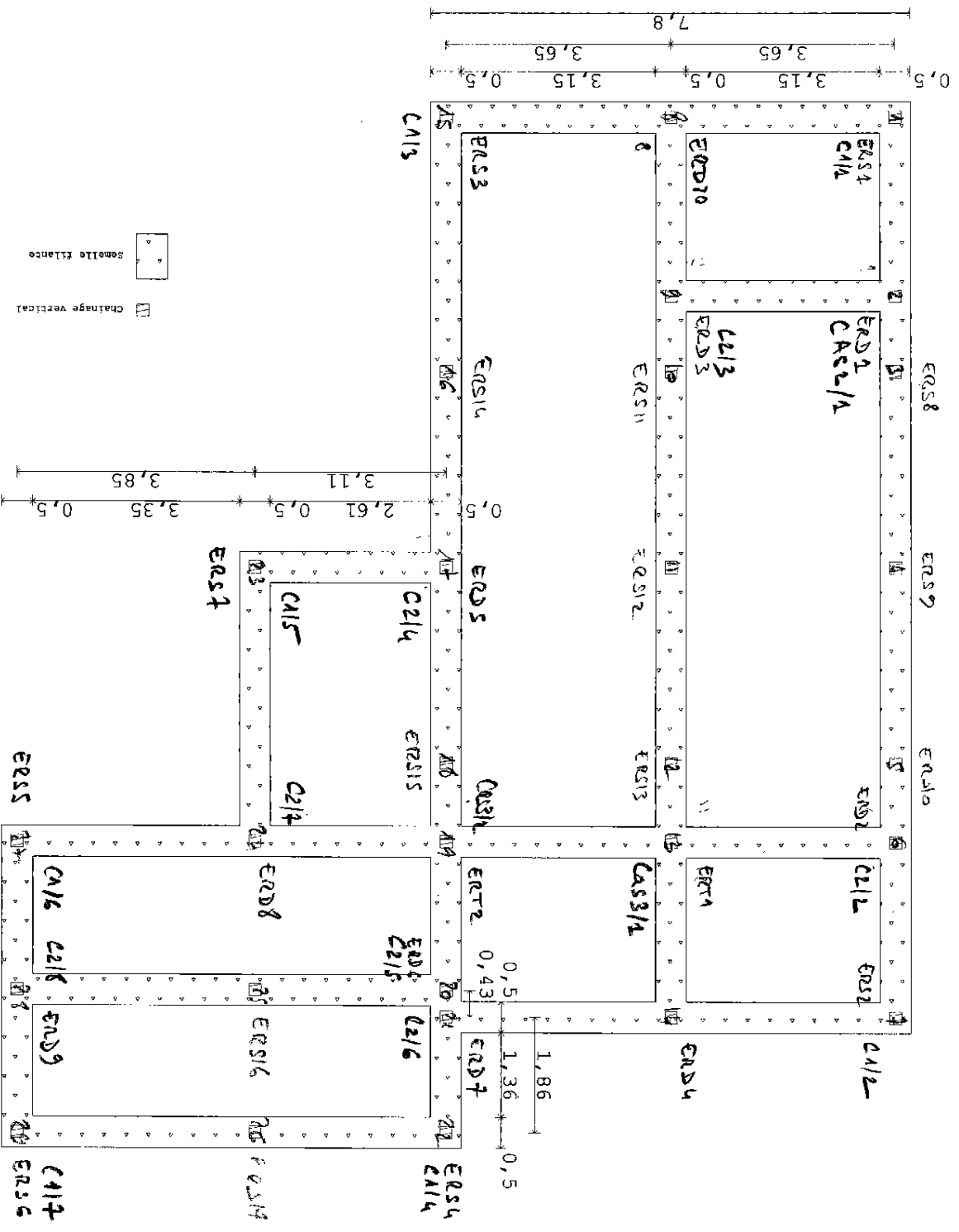
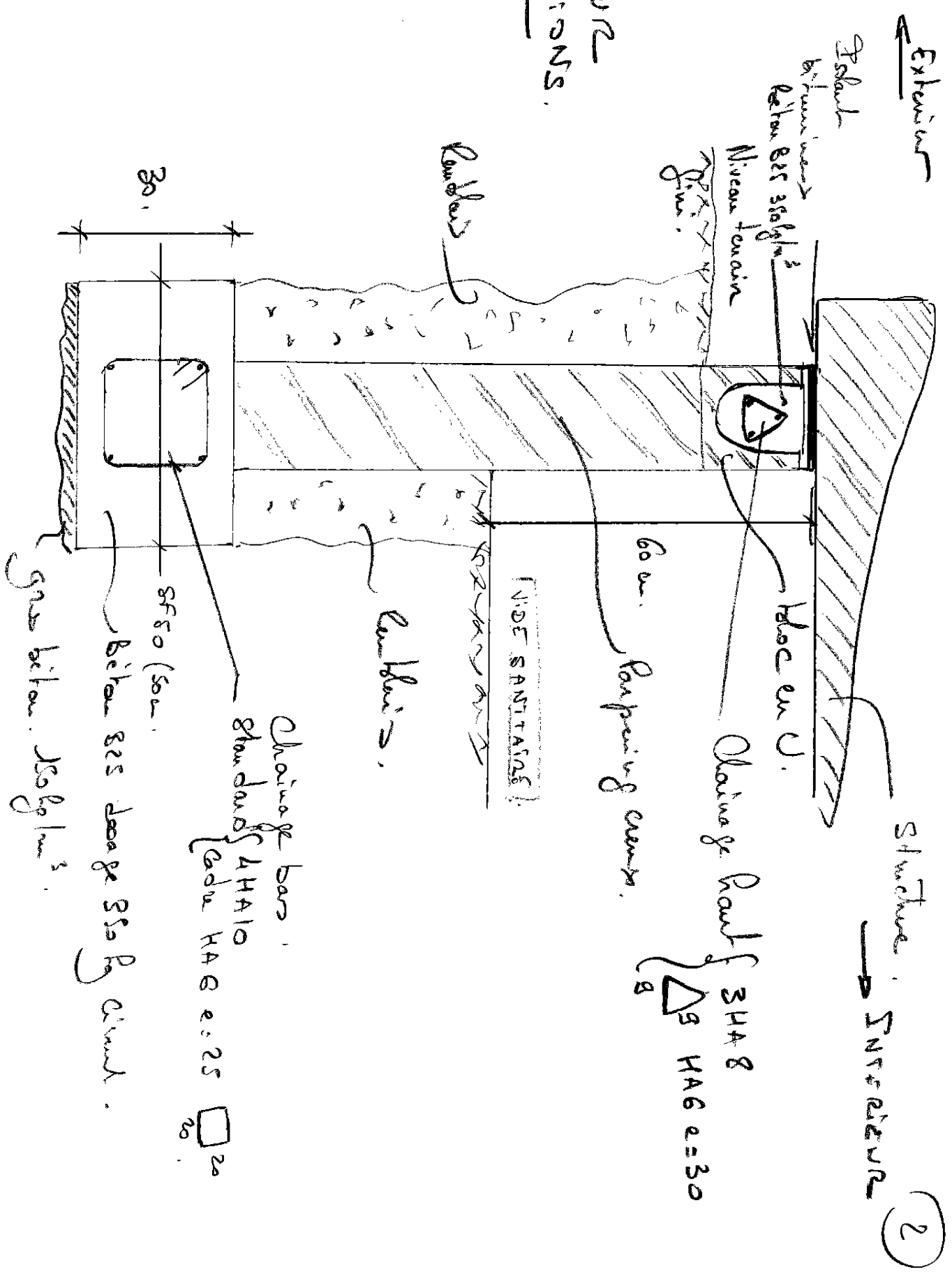


14,95
 2,87 1,21 3,14 8,27 3,14 1,26 2,82
 0,5 2,37 0,5 0,5 0,5 2,32 0,5

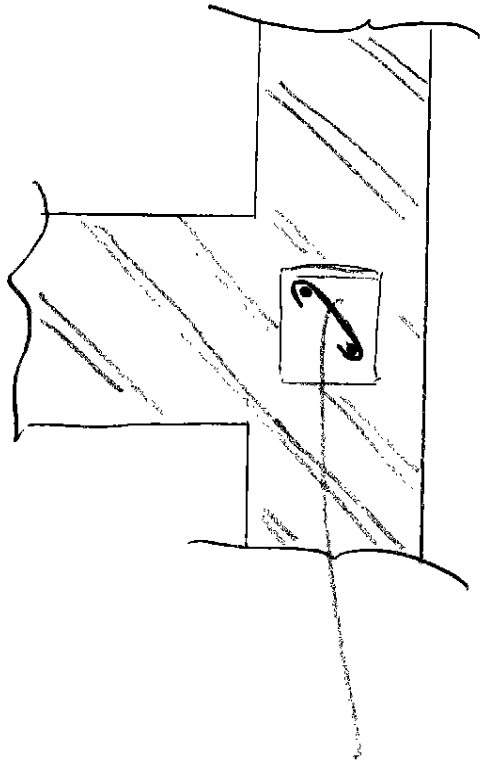


1

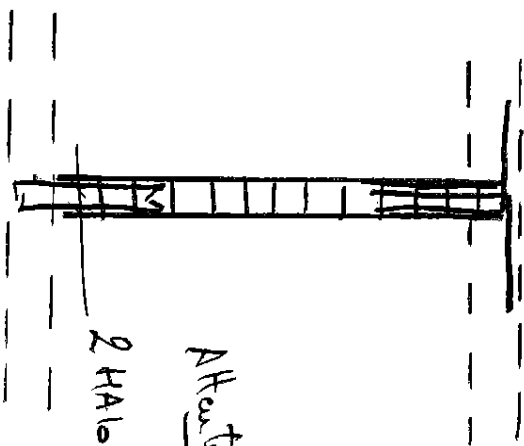
COUPES
TYPE SUR
FONDACTIONS.



Raidisessars



QHA10 | Pibok
 EP HA6 L=23 e=25
 102

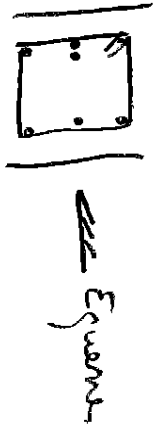
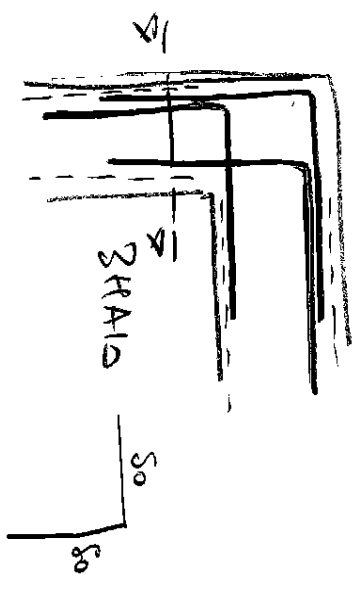


Attait raidisessars
 QHA10
 $\frac{1}{30} \frac{1}{10}$

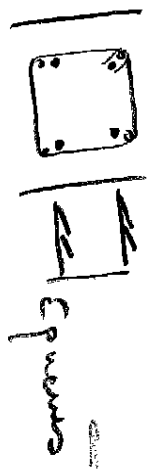
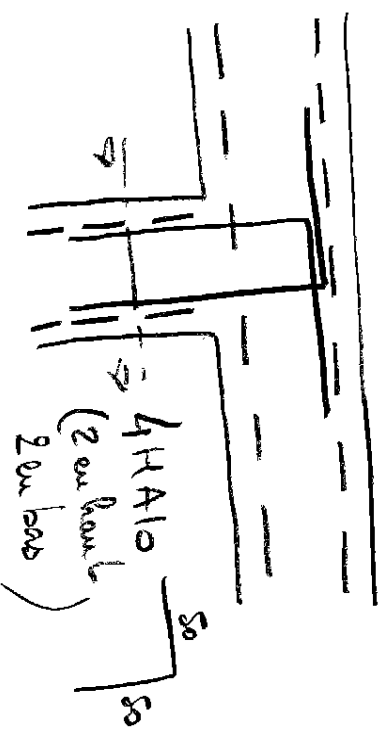
REINFORCING ANGLES (Change of load)

(4)

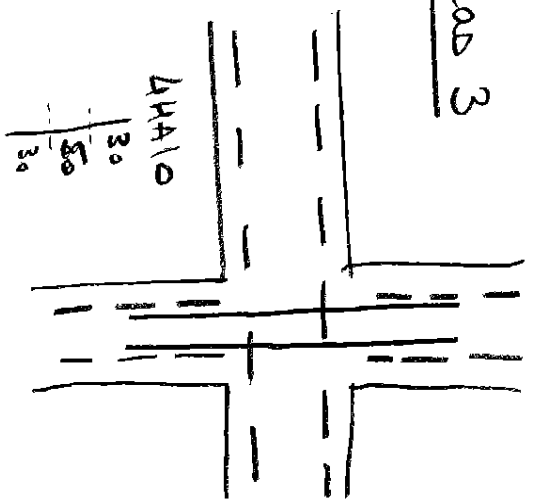
Case 1



Case 2



Case 3



Yield

(5)

FOUNDATIONS

- Chairs of bars

$$2 \times 15.00 + 15.00 + 1.86 + 4.7 + 4.4 + 4.8 \times 2 + 3.4 + 7.8 + 7.0 \times 3 + 3.20 = 107.3 \Rightarrow 18 \times 6m$$

- Railings (Chairs vertical bars)

$$29 \text{ Units} \times 4.20 = 121.8m \quad \left\{ \begin{array}{l} 2 \text{ HA10} \\ \text{EP HA6} \end{array} \right. \text{ Pillar} + 29 \times 2 \text{ HA10} \quad \left\{ \begin{array}{l} 30 \\ 20 \end{array} \right. + \text{Equivalents} \quad \left\{ \begin{array}{l} 30 \\ 50 \end{array} \right. \text{ HA10}$$

- Drainage Rand

18x6m Standard on Trigonulim 3K48 HA6e=30 Δ^B

- Equivalents

<u>Case 1</u> x 7	3 x 7 HA10	$\frac{50}{50}$
<u>Case 2</u> x 8	4 x 8 HA10	$\frac{50}{50}$
<u>Case 3</u> x 2	4 x 2 HA10	$\frac{40}{40}$

RECAPITULATIF DETRÉ

(6)

Chainage bar 4 HA 10 cad HA 6 e=25 \square_{20}^{20} 18x6m

Clauage bord 3 HA 8 cad HA 6 e=30 Δ_{20}^3 18x6m.

Ridreses 2 HA 10 Ep HA 6 e=25 \int_{10} 6x6m

Egures 17x2 + 10x3 + 2x4 + 3x7 + 4x8 = 125 \rightarrow 130 HA 10 $\sqrt[50]{50}$

Clé 4x2 \rightarrow 10 HA 10 $\frac{110}{5}$

Attouts 29x2 = 58 \rightarrow 60 HA 10 $\frac{30\sqrt[20]{20}}{5}$